

Preparing for DBMoto End-of-Life

A Practical Guide to Replacement Planning

DBMoto's June 2026 end-of-life requires proactive planning. As the deadline approaches, you need a replacement that can deploy quickly and doesn't require you to re-architect your entire data ecosystem. Replacement is daunting, but with the right preparation, key risks can be mitigated. For a successful replacement, organizations should evaluate source configuration readiness, destination strategy, production impact, and transformation logic translation.

While there are multiple replacement paths, most transitions succeed through structured parallel deployment and validation. Ultimately, a successful transition prioritizes **continuity first** and **modernization on your timeline**.



Why DBMoto EOL Requires Structured Planning

Syntiti's end-of-life support for DBMoto introduces real operational risk for organizations that rely on IBM Db2 data to power reporting, analytics, and daily business operations.

End-of-life does not mean systems stop working overnight. Your data will still be accessible in June 2026. The risk of continuing to use DBMoto builds gradually.

End-of-life means:

- No new software updates or patches
- No vendor-backed updates
- No guaranteed long-term support
- Increasing exposure to security, compliance, and performance issues

Unsupported software becomes progressively harder to maintain as database versions evolve, integration points change, and institutional knowledge gradually disappears. In regulated industries this introduces compliance exposure, and in high-availability environments even small change data capture failures can disrupt reporting or downstream analytics.

The primary risk is not immediate failure but delayed action that forces cutover decisions under pressure.

Without structured planning, teams often find themselves responding reactively—accelerating migrations, rebuilding destinations quickly, or making architectural decisions they might not otherwise choose. By planning early, replacement becomes a managed transition, not a forced re-architecture.

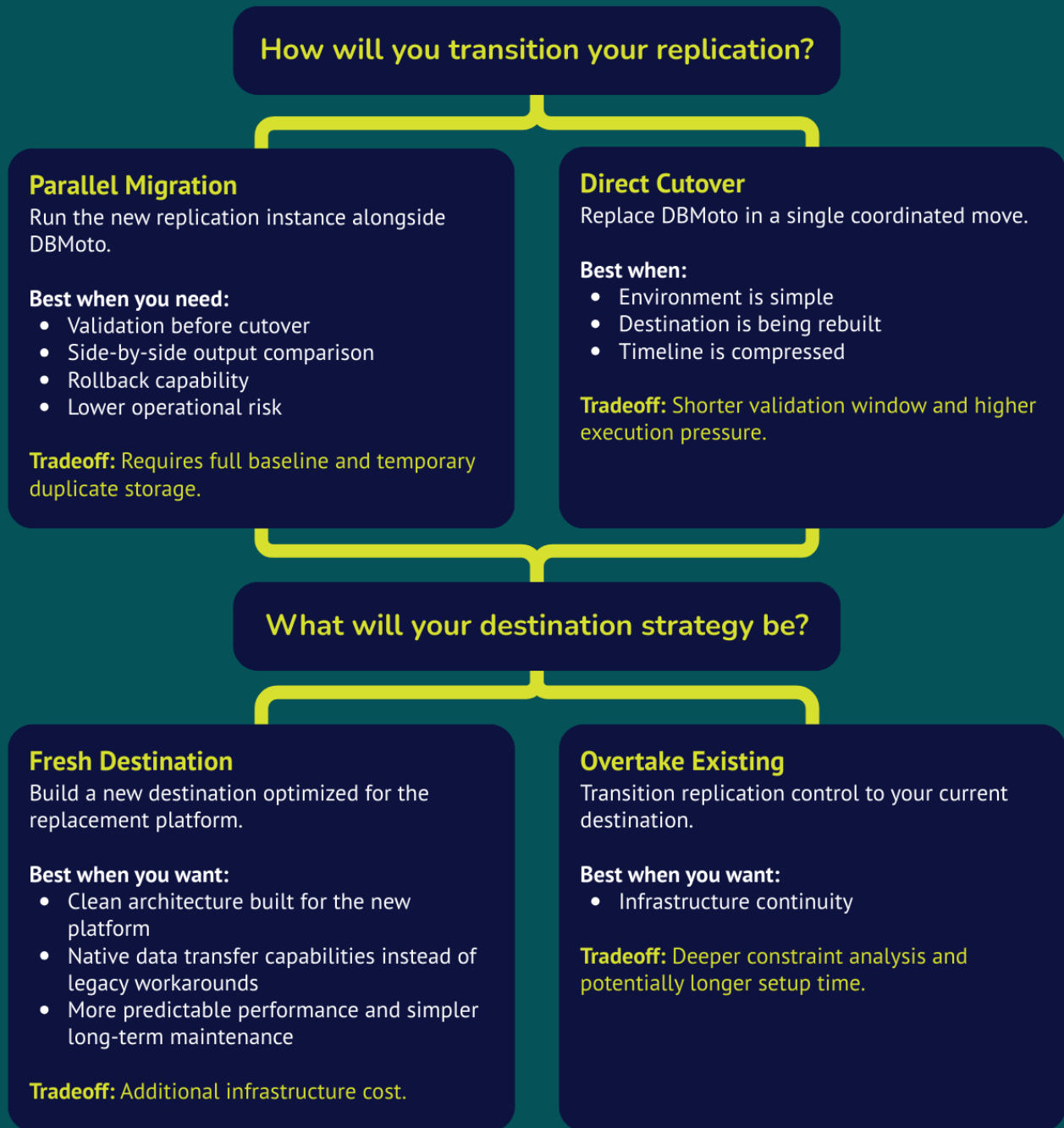
Structured replacement planning allows you to:

- Inventory your current replication footprint
- Validate source readiness and change data capture configurations
- Define a controlled migration strategy
- Preserve reporting continuity during transition
- Maintain architectural control over your data environment

The goal is continuity first. Modernization on your timeline.

Choosing Your Migration Path

Replacing DBMoto involves two related decisions that will affect how quickly your replication tool transition will happen: how you will transition and where you will land.



In many cases, teams choose a fresh destination to simplify architecture and reduce long-term maintenance.

The right combination balances risk tolerance, destination constraints, and your long-term architecture goals.

Migration Timing Strategy

There are two primary ways to transition from DBMoto to a new data replication platform: parallel migration or a direct cutover.

Parallel Migration

Parallel migration introduces a new replication instance while DBMoto continues to run. Teams configure sources and destinations, allow incremental replication to begin, and validate results before scheduling cutover.

This approach is common in production environments where reporting continuity matters or where multiple downstream systems depend on the same replication workflow. Running both systems temporarily allows teams to compare output, monitor latency, and confirm transformation accuracy before transition.

Direct Cutover

Direct cutover replaces DBMoto in a single coordinated transition. Replication is configured, validated, and activated without a parallel run.

This approach works best in simpler environments because validation time is shorter, teams should confirm source readiness, review transformation logic, and coordinate closely with application owners before scheduling the cutover window.

Fresh Destination

A fresh destination creates a new target environment for the replacement replication platform. Data is moved into the new destination, validated, and downstream systems are transitioned once results are confirmed.

This approach improves predictability because it avoids legacy triggers, and complicated workarounds. The tradeoff is operational: fresh builds additional infrastructure that may take additional budget and approval time.

Overtake an Existing Destination

Overtaking preserves the current destination while transferring replication control to the new platform. DBMoto stops and the replacement system begins replicating from the current state.

This approach requires careful evaluation of destination constraints, indexing strategies, and historical schema changes that could affect replication performance.

Once you've chosen your migration path, the next step is preparation. **A structured planning framework helps reduce risk and organize the transition.**

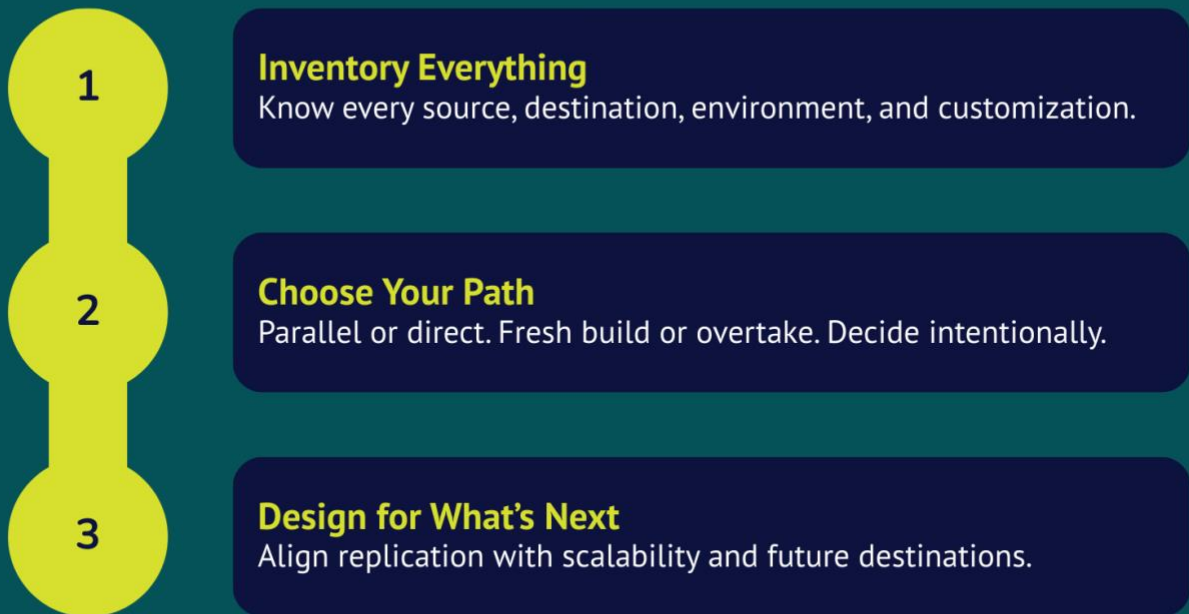
Understanding Your Current DBMoto Deployment

Before defining a migration plan, you need a clear understanding of what you're actually running today.

Many organizations have operated DBMoto reliably for years. Over time, environments evolve, new destinations are added, scripts are layered in, and environments expand. What began as a straightforward replication setup often becomes a mission-critical integration layer supporting reporting, analytics, and operational workflows.

A Practical Replacement Planning Framework

As you plan your DBMoto replacement, you want a safe, supported transition that respects the system you've built. Use this three-step framework to protect continuity and reduce migration risk.



Continuity first. Modernize on your timeline.

Common Deployment Patterns

While every environment is unique, several patterns appear frequently in DBMoto installations:

- IBM Db2 for i (AS/400) as the primary source system
- One-to-many replication, where a single source feeds multiple destinations
- Multiple replication environments, including production, quality assurance, and development

For example, one-to-many replication may mean that reporting, downstream applications, and analytics platforms all depend on a single replication workflow. If you are managing separate replication environments, they may require phased transition sequencing rather than a single migration event.

Understanding this structure prevents surprises later.

Diagnostic Questions to Clarify Your Risk Profile

Before evaluating replacement options, ask:

- How many environments are currently being replicated?
- Are production and non-production systems handled separately?
- Are custom scripts in use?

These questions help clarify the scope of your transition. They reveal the level of translation effort that may be required, whether a fresh destination build or an overtake strategy makes more sense, and how much mapping, transformation, and validation work should be built into your migration plan.

How to Evaluate DBMoto Replacement Vendors

Vendor evaluation should focus on two questions: how the replication architecture behaves under production conditions, and how much effort is required to migrate and operate it over time. The following areas help teams determine whether a replacement platform simplifies migration or shifts complexity elsewhere. In many organizations, replacement platforms are evaluated across both technical and operational criteria, including maintainability, scalability, security posture, and long-term vendor roadmap.

Key evaluation areas include:

- Architecture and scalability
- Deployment and vendor direction
- Script mapping and data modeling
- Time to value and total cost of ownership

The checklist on the next page summarizes these criteria. The sections that follow explain how each factor affects migration complexity and long-term platform stability.

DBMoto Replacement Vendor Evaluation Checklist

Use these criteria to assess architectural fit, operational impact, and long-term viability.

Designing the Right Replacement Architecture

Architecture and Scalability

- Log-based change capture with minimal production footprint?
- Supports fresh builds and overtaking existing destinations?
- Enables one-to-many replication without redesign?

Deployment and Vendor Direction

- Supports on-prem, hybrid, and cloud deployment models without architectural redesign?
- Infrastructure control retained, not SaaS-forced?
- Clear long-term product roadmap?

Transformation and Data Modeling

- Handles data dictionary lookups and field metadata mapping?
- Supports reusable transformation definitions across environments?
- Minimal dependency on service-level scripting?

The Practical Work of Migration

Script and Mapping Migration

- Can existing scripts or mappings be translated efficiently?
- Supports bulk transformation or mapping updates?
- Reduces manual recreation of replication logic?

Time to Value and Total Cost of Ownership

- How quickly can the platform be installed and validated?
- How much implementation effort is required?
- Are support and operational costs predictable over time?

Choose a platform that restores architectural control and supports your roadmap beyond this migration.

Designing the Right Replacement Architecture

The architecture of the replication platform determines how easily environments can expand, integrate with new systems, and adapt to future data needs. Platforms that support flexible deployment, scalable replication models, and standards-based transformations provide greater long-term architectural control.

Architecture and Scalability

The change data capture model affects both performance and operational stability. Log-based replication reads committed transactions directly from database logs, reducing production impact while supporting one-to-many replication patterns.

Deployment and Vendor Direction

Deployment flexibility determines how much control organizations retain over infrastructure placement. Platforms that support on-premises, hybrid, and cloud deployments allow environments to evolve without forcing architectural change.

Transformation Model

Transformation logic becomes difficult to maintain when it depends on proprietary scripting environments. SQL-based transformation models allow teams to define reusable logic using standard tools and maintain consistent mappings across environments.

The Practical Work of Migration

Beyond architecture, teams must evaluate the operational effort required to move from DBMoto to a new platform. Migration complexity often depends on how existing mappings, transformation logic, and replication workflows translate into the replacement system.

Script Mapping and Data Modeling

DBMoto environments often contain mappings, metadata lookups, and field-level transformations that must carry forward into the replacement platform. Migration is simpler when these rules translate into configuration-based logic rather than requiring script recreation.

Time to Value and Total Cost of Ownership

Replacement decisions should consider how quickly the platform can be deployed and how much operational effort it requires after cutover. Faster deployment and lower maintenance overhead reduce both time to production and long-term operating cost.

These evaluation criteria help determine whether a replacement platform simplifies migration or shifts operational risk elsewhere.

Why Teams Choose Stelo

The risks outlined in this guide can be mitigated with the right replication architecture. Stelo's deep experience with IBM Db2 environments makes it a strong option for organizations replacing DBMoto.



Real-Time Change Data Capture with Minimal Production Footprint

Stelo uses real-time change data capture to replicate committed transactions directly from database logs. In steady-state operation, replication typically consumes **less than 1% CPU** and avoids competing with production workloads.



Automated Data Modeling Capabilities

Stelo automatically replicates table schemas, including column attributes and data types, between heterogeneous databases. It maps source types to destination types (e.g., EBCDIC to ASCII) automatically, including handling Unicode conversions, reducing the need for manual data modeling. No need for complex scripting or programming.



Rapid Deployment and Validation

In straightforward environments, Stelo deployments can often be **installed and validated in hours rather than weeks**. Replication setup typically includes agent configuration, subscription creation, and incremental validation before cutover.

FAQs

Will replication impact my Db2 production system?

Stelo uses real-time change data capture to replicate committed changes with minimal impact on your Db2 source. During steady-state operation, replication runs with typically <1% CPU footprint and does not rely on table polling or trigger-based extraction.

The phase that requires planning is baseline. Initial load behavior differs from ongoing change data capture, so large or business-critical tables may require scheduled execution windows depending on workload and configuration.

Can we run Stelo in parallel with DBMoto before cutover?

Yes. Parallel migration is commonly used in production environments. A new replication instance can be deployed and validated alongside DBMoto before scheduling cutover.

This allows side-by-side comparison, latency validation, and controlled transition criteria.

How will Stelo handle DBMoto data dictionary lookups, field metadata, or custom script mapping?

Many DBMoto deployments rely on formatting or date conversion logic rather than complex scripting. Stelo handles many of these requirements through built-in mapping and transformation features, reducing the need to recreate script-heavy logic manually.

For highly customized environments, engineering support can assist with script translation and mapping.

Can Stelo handle transformations in bulk across multiple subscriptions?

Yes, Teams can apply common mapping and transformation logic through built-in configuration rather than editing individual scripts one at a time. This is especially helpful when migrating multiple subscriptions with similar transformation requirements.

Can we overtake our existing destination, or do we need to build a new one?

Stelo supports both approaches. A fresh destination provides cleaner architecture and predictable performance.

The choice depends on operational constraints and long-term architecture goals.

Does Stelo require SaaS deployment?

No. Infrastructure placement remains under organizational control. Stelo supports on-premises, hybrid, and cloud deployments.

How long does a typical migration take?

Timeline depends on data volume, number of environments, and transformation complexity.

In straightforward environments, replication can be configured and validated in under 24 hours. Larger environments require structured baseline planning and coordinated cutover scheduling.

Does Stelo support IBM Db2 for i and Db2 LUW?

Yes. Stelo supports IBM Db2 for i (AS/400) and Db2 LUW environments, including *AFTER journaling configurations for incremental replication and multi-destination configurations.

Will we need professional services?

Most environments can be migrated using Stelo's no-code, configuration-based approach. Replication setup, transformation rules, and validation workflows are defined through structured configuration rather than custom scripting. For highly customized DBMoto environments or complex downstream dependencies, engineering support can assist with translation, baseline planning, and structured cutover.

Continuity First. Modernization on Your Timeline.

DBMoto's end-of-life introduces urgency, but migration does not require architectural disruption.

When teams assess their current deployment, plan migration paths early, and validate replication before cutover, replacement becomes a controlled transition rather than a forced redesign.

Stelo's architecture prioritizes operational stability, deployment flexibility, and long-term control. For teams replacing DBMoto, that means less manual recreation, faster time to value, and a migration path that does not force unnecessary architectural change.

Request a DBMoto Replacement Consultation

Schedule a technical consultation with Stelo to review your current Db2 environment, evaluate migration paths, and define a structured transition plan aligned with your operational requirements.

[REQUEST A MIGRATION REVIEW](#)